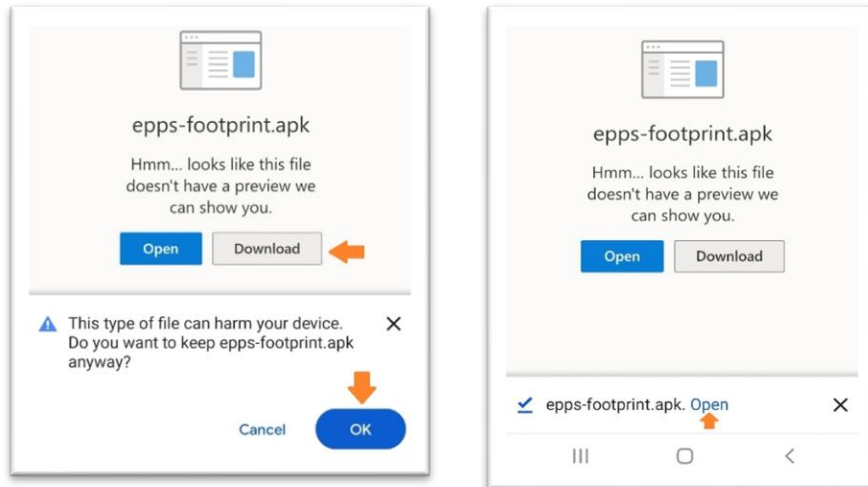


## GPS App Instructions

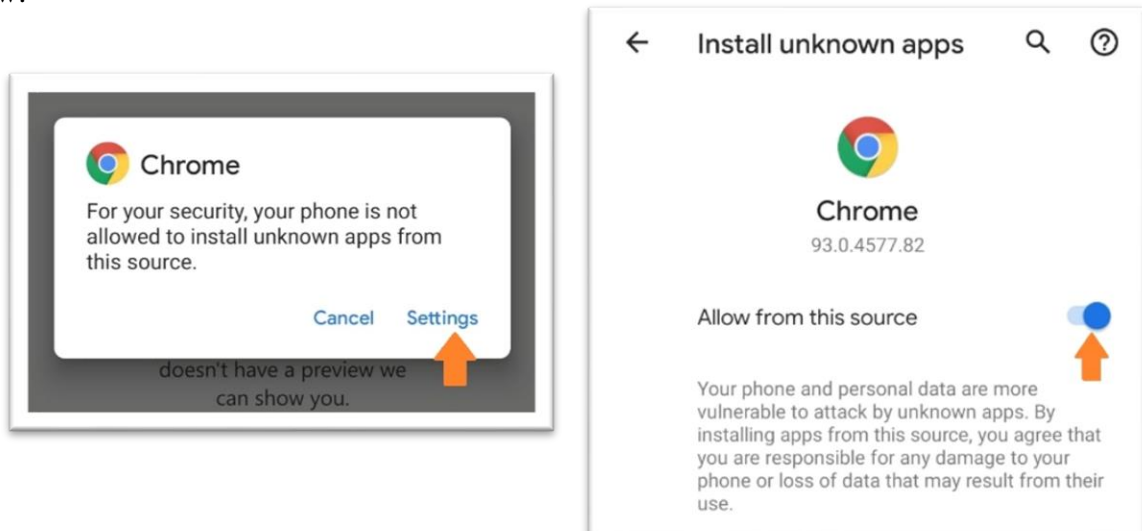
### Downloading and Installing the GPS App

Please follow these steps to install the GPS app on your personal phone. If you are using a phone provided by the research team, please go to step 5.

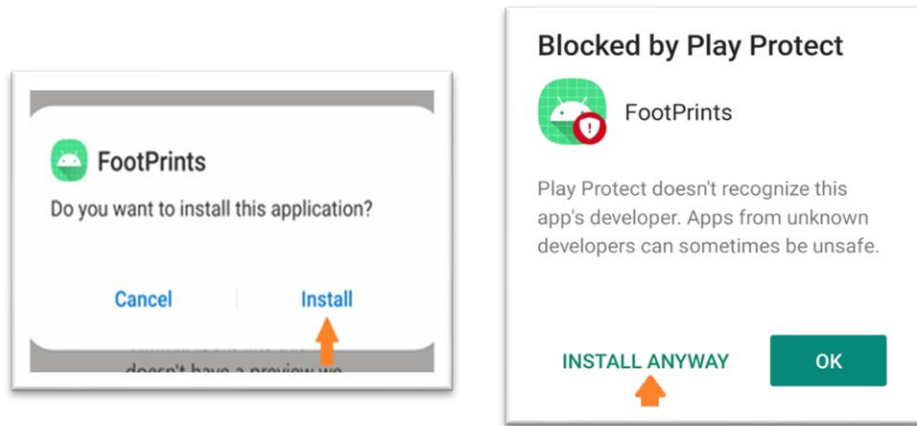
1. Use this link to download the app: [epps-footprint.apk](#), then press the **download** button. When a warning message appears, select **ok**. This warning message appears because the app was developed by our research member at the University of Texas at Dallas, specifically for this research project. Hence, we didn't register the app in Google Play, so your phone prompts the warning message. The app is safe to download and install.
2. Once the app has been downloaded press the **Open** button.



3. A message from Google will appear advising that your phone is not allowed to install apps from this source. Please go to **settings** and select **allow from this source**. The toggle button will appear unclicked (grey). Once you select it, it will turn blue. Then go back using the upper arrow.



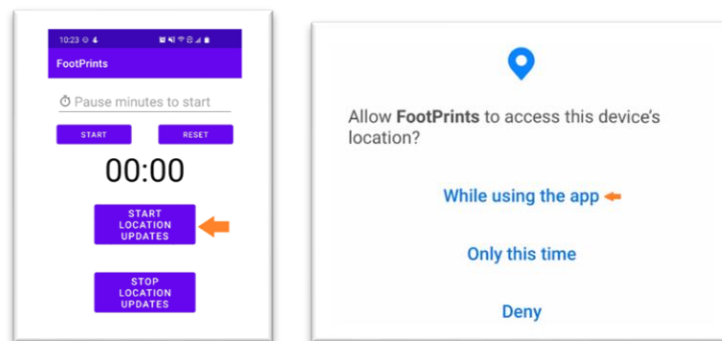
4. A message from FootPrints will appear, press the **Install** button. When the warning message from Play Protect pops up. Select the **Install Anyway** button.



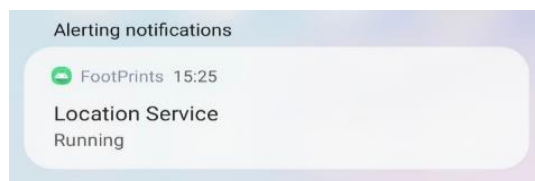
You have now successfully installed the app, please see the next set of instructions to start running the app

### Running the App

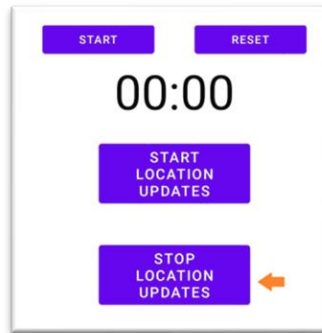
5. Open the FootPrints app and press **the Start Location Updates** button. The first time you run the app it will request permission to access your location. Select **while using the app**.



6. You should receive a notification from FootPrints stating **Location Service Running**. You will also see the app icon at the top of your screen where you see your notifications. This means the app is running and recording your location.



7. We would like for you to keep the app running the entire day and every day during the 10-day period. However, we understand that some people may feel uncomfortable having their daily location recorded. You may stop the app on your phone and turn it back on later. If you wish to do so, open the app and press the **Stop Location Updates** button. Your location will not be recorded until you click the Start Location Updates button again.



8. If your phone turns off during the day, please turn it back on at your earliest convenience, open the app and press the **Start Location Updates** button again.
9. Remember that the data will be encrypted in AES256 that meets top secret standards and will be only accessible to the authorized members in the research team. Your name or any other identifying information is not directly associated with the location data. We make every effort to maintain your confidentiality.
10. Once the 10-day period is over, there are two ways to uninstall the app from your personal phone (do not do this if you are using a phone provided by the research team):
- Long-press on the app icon until the app shortcuts pop up (see image). Click **uninstall**. OR,
  - Go to Settings → Apps → FootPrints → Select uninstall.



If you have any questions or need assistance, please feel free to contact the Close Relationships and Health lab at [crhlab@utdallas.edu](mailto:crhlab@utdallas.edu) or (972) 883-4452.